



"innovation in its most functional form"

## PRODUCT DATA SHEET

# SG25TE

## SECURE-GRIP IN-LINE HYDRAULIC FLANGE SPREADER

**SPREADING FORCE:**  
10,000 psi (700 bar) = 25 T (250 kN) per tool  
It is recommended that tools are used in pairs giving  
2 x 25 = 50 T (500 kN)

**SPREADING DISTANCE = 0-120mm (0-4.72")**  
**TOOL WEIGHT = 24kg (52.9 lbs)**

### KIT COMPONENTS

- 1 x SG25TE
  - 1 x Spreading plug
  - 1 x 10,000 psi (700 bar) HP550S Sealed Hand Pump with Gauge
  - 1 x 10,000 psi (700 bar) Hydraulic Hose, 2m (78.75")
  - 1 x 300mm (12") Vernier Calliper
  - 1 x Spacer Plate
  - 1 x Safety Block
  - 1 x Instruction Manual
  - 1 x Carry Case with protective foam inserts
- Product Code: SG25TESTD



### COLLETS (purchased separately)

- |                          |                          |
|--------------------------|--------------------------|
| 2 x M76 (3") Collets     | 2 x M90 (3 1/2") Collets |
| 2 x M80 (3 1/4") Collets | 2 x M95 (3 3/4") Collets |
| 2 x M84 (3 3/8") Collets | 2 x M100 (4") Collets    |

### WEIGHTS AND DIMENSIONS

Tool Weight = 24 kg (52.9 lbs)	Carry Case Dimensions:
Case Weight = 9 kg (19.8 lbs)	890 x 570 x 165mm (35.04" x 22.44" x 6.50")
Gross Weight = 50 kg (110 lbs)	

TOOL DIMENSIONS - CLOSED



TOOL DIMENSIONS - OPEN



SPREADING PLUG DIMENSIONS



info@equalizerinternational.com  
www.equalizerinternational.com

# SG25TE

SECURE-GRIP IN-LINE HYDRAULIC FLANGE SPREADER



"innovation in its most functional form"

## RANGE OF APPLICATION

The SG25TE is usable on all standard flanges that have been specified to accept the following bolt sizes:

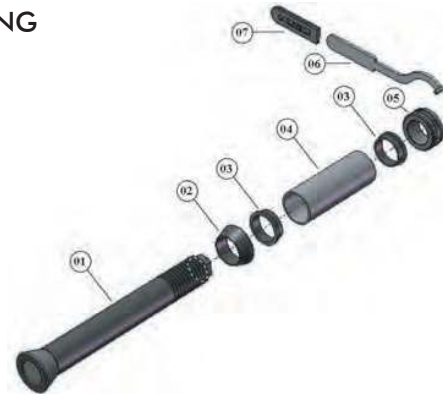
M76, M80, M84, M90, M95, M100, 3", 3 1/4", 3 3/8", 3 1/2", 3 3/4", 4"

This includes ANSI, DIN, SPO, ASME, API and BS flanges.

For a detailed range of application please request the Secure-Grip In Line Hydraulic Operator Instruction Manual.

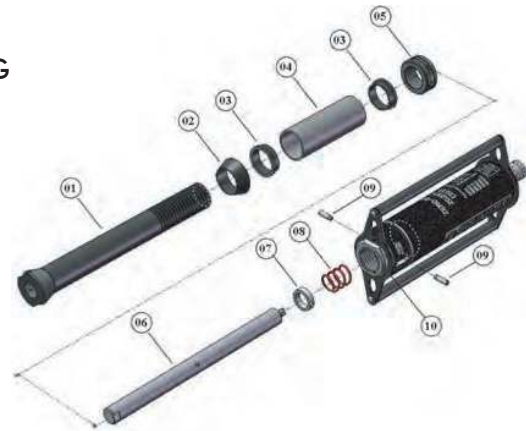
### SPREADING PLUG PARTS LIST AND EXPLODED DRAWING

ITEM	PART No.	DESCRIPTION	QUANTITY
01	676001-01	COLLET PLUG	01 each
02	672201-01	DRIVE CONE	01 each
03	672101-01	THRUST WASHER	02 each
04	675501-01	DRIVE TUBE	01 each
05	672001-01	DRIVE NUT	01 each
06	662601-01	SPANNER	01 each
07	313301-01	SPANNER SLEEVE	01 each



### ACTUATOR PARTS LIST AND EXPLODED DRAWING

ITEM	PART No.	DESCRIPTION	QUANTITY
01	672301-01	COLLET HOLDER	01 each
02	672201-01	DRIVE CONE	01 each
03	672101-01	THRUST WASHER	02 each
04	675501-01	DRIVE TUBE	01 each
05	672001-01	DRIVE NUT	01 each
06	672401-01	PISTON ROD	01 each
07	671401-01	SPRING COLLAR	01 each
08	661301-01	SAFETY SPRING	01 each
09	661101-01	SPRING COLLAR DOWELL	02 each
10		SEE HYDRAULIC CYLINDER PART LIST	



### HYDRAULIC CYLINDER PARTS LIST AND EXPLODED DRAWING

ITEM	PART No.	DESCRIPTION	QUANTITY
01	402101-01	HANDLE SCREWS	02 each
02	633001-01	HANDLE RETAINING BOLT	04 each
03	671501-01	CYLINDER HANDLE FRONT PROFILE	01 each
04	671201-01	CYLINDER CAP	01 each
05	671001-01	PISTON ROD BEARING	01 each
06	671101-01	HYDRAULIC RETURN SPRING 1	01 each
07	670901-01	HYDRAULIC RETURN SPRING 2	01 each
08	671701-01	CYLINDER HANDLE	02 each
09	671601-01	CYLINDER HANDLE REAR PROFILE	01 each
10	670801-01	HYDRAULIC PISTON	01 each
11	670601-01	PISTON SEAL BACKUP RING	01 each
12	670501-01	PISTON SEAL	01 each
13	670701-01	PISTON BEARING	01 each
14	670401-01	HYDRAULIC CYLINDER	01 each
15	300901-01	FEMALE HALF COUPLER	01 each

