



"innovation in its most functional form"

PRODUCT DATA SHEET

SG6™

SECURE-GRIP MECHANICAL FLANGE SPREADER

SPREADING FORCE:
 80 ft/lbs (108Nm) = 6 T (60 kN) per tool
 It is recommended that tools are used in pairs giving
 2 x 6 = 12 T (120 kN)

SPREADING DISTANCE = 0-80mm (0-3.15")
TOOL WEIGHT = 7.5kg (16.5 lbs)

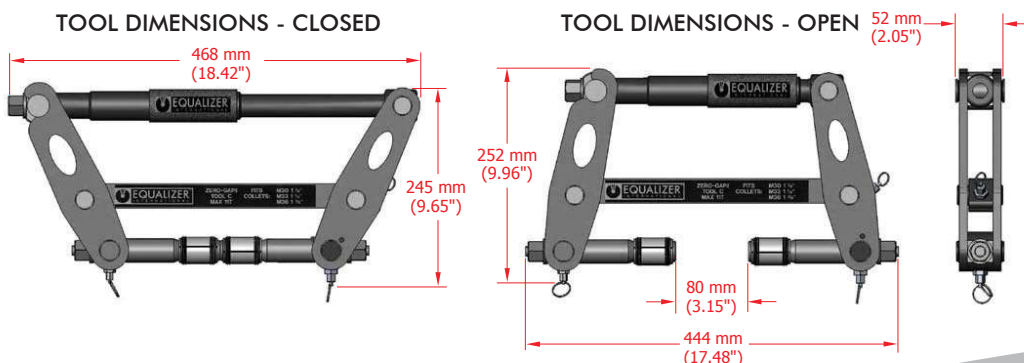
KIT COMPONENTS

- 1 x SG6™ Tool
 - 1 x 150mm (6") Vernier Calliper
 - 1 x 3/8" Drive Torque Wrench and 21 mm Socket
 - 1 x Safety Block
 - 2 x M24 (7/8") Collets
 - 2 x M27 (1") Collets
 - 1 x Instruction Manual
 - 1 x Carry Case with protective foam inserts
- Product Code: SG6™MSTD



WEIGHTS AND DIMENSIONS

| | | |
|--------------|---------------------|---------------------------------------------|
| Tool Weight | = 7.5 kg (16.5 lbs) | Carry Case Dimensions: |
| Case Weight | = 6 kg (13.2 lbs) | 640 x 540 x 165mm (25.20" x 21.26" x 6.50") |
| Gross Weight | = 16 kg (35 lbs) | |



info@equalizerinternational.com
 www.equalizerinternational.com

RANGE OF APPLICATION

The SG6™ is usable on all standard flanges that have been specified to accept the following bolt sizes:

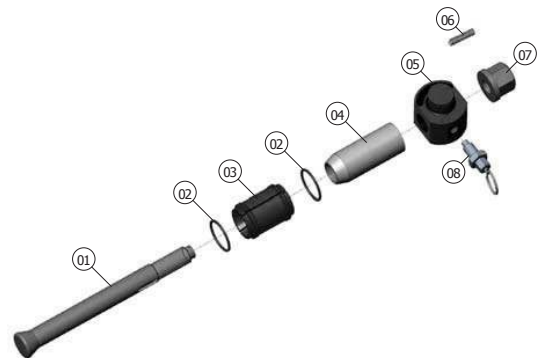
M24, M27, 7/8", 1"

This includes ANSI, DIN, SPO, ASME, API and BS flanges.

For a detailed range of application please request the Secure-Grip Mechanical Operator Instruction Manual.

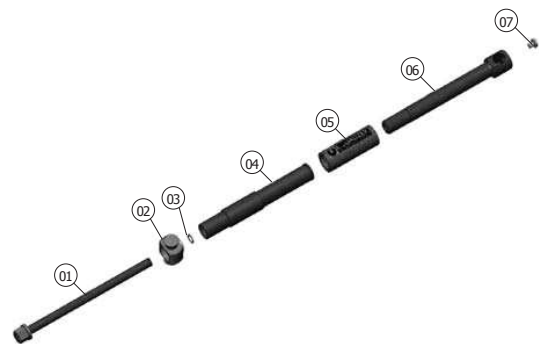
COLLET HEAD PARTS LIST AND EXPLODED DRAWING

| ITEM | PART No. | DESCRIPTION | QUANTITY |
|------|-----------|------------------------|----------|
| 01 | 620401-01 | COLLET HOLDER | 02 each |
| 02 | 621001-01 | M24 SPRING RING* | 04 each |
| | 621101-01 | M27 SPRING RING* | 04 each |
| 03 | 620201-01 | M24 COLLET* | 02 each |
| | 620301-01 | M27 COLLET* | 02 each |
| 04 | 620501-01 | DRIVE CONE | 02 each |
| 05 | 620601-01 | COLLET UNION | 02 each |
| 06 | 620701-01 | CENTRING SPRING 1 | 02 each |
| 07 | 620801-01 | COLLET NUT | 02 each |
| 08 | 632001-01 | COLLET SPRING PLUNGER* | 02 each |



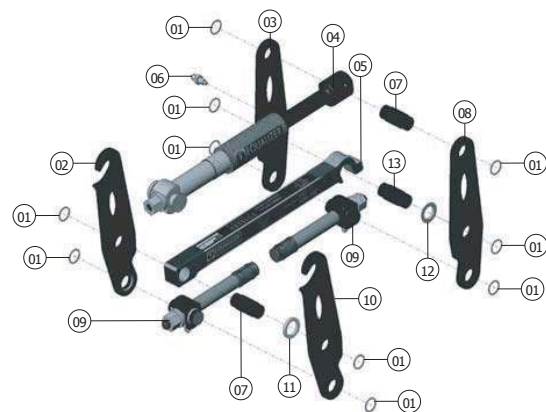
ACTUATOR PARTS LIST AND EXPLODED DRAWING

| ITEM | PART No. | DESCRIPTION | QUANTITY |
|------|-----------|--------------------------|----------|
| 01 | 622201-01 | ACTUATOR BOLT | 01 each |
| 02 | 622501-01 | OPEN ACTUATOR UNION | 01 each |
| 03 | 623101-01 | ACTUATOR RETAINING RING* | 01 each |
| 04 | 622701-01 | ACTUATOR SLEEVE | 01 each |
| 05 | 632801-01 | FOAM GRIP | 01 each |
| 06 | 622901-01 | CLOSED ACTUATOR UNION | 01 each |
| 07 | 623001-01 | ACTUATOR RETAINING BOLT | 01 each |



SG6™ PARTS LIST AND EXPLODED DRAWING

| ITEM | PART No. | DESCRIPTION | QUANTITY |
|------|-----------|----------------------------|----------|
| 01 | 621501-01 | CANTILEVER RETAINING RING* | 10 each |
| 02 | 621401-01 | OPEN LEG R/H | 01 each |
| 03 | 621801-01 | CLOSED LEG R/H | 01 each |
| 04 | | SEE ACTUATOR PARTS LIST | |
| 05 | 622101-01 | CANTILEVER | 01 each |
| 06 | 632001-01 | CANTILEVER PLUNGER | 01 each |
| 07 | 621701-01 | CANTILEVER PIN | 02 each |
| 08 | 621901-01 | CLOSED LEG L/H | 01 each |
| 09 | | SEE COLLET HEAD PARTS LIST | |
| 10 | 621301-01 | OPEN LEG L/H | 01 each |
| 11 | 623401-01 | CANTILEVER SPACER | 01 each |
| 12 | 623501-01 | CANTILEVER WASHER | 01 each |
| 13 | 623601-01 | HOOK PIN | 01 each |



* Items are supplied in Spares Kit Part No: 626060-01